

S & N LABS

2021 E. Fourth Street

Santa Ana, California 92705

(714) 543-2211

24 October 2019


Job Number:	23435b
PO Number:	verbal

Chemyo, LLC
4023 Kennett Pike, Suite 59371
Wilmington, Delaware 19807

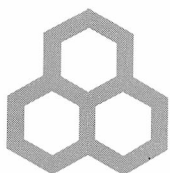
AMENDED REPORT OF ANALYSIS

Two bottles labeled "GW-501516 10mg/mL" were received on 20 September 2019. The liquids in the bottles were analyzed for the concentration of the active agent using high pressure liquid chromatography (HPLC). The results are summarized in the table below.

Sample	Concentration (mg/mL)
GW-501516 lot BA9230	9.2
GW-501516 lot BA9230	9.1



Neil E. Spingarn, Ph.D.
President



S & N LABS

2021 E. Fourth Street

Santa Ana, California 92705

(714) 543-2211

11 August 2019

Job Number:	23312c
PO Number:	verbal

Chemyo LLC
4023 Kennett Pike, Suite 59371
Wilmington, Delaware 19807

REPORT OF ANALYSIS

One packet labeled "GW-501516" was received on 5 August 2019. The powder in the packet was analyzed for purity using high pressure liquid chromatography (HPLC). The results are summarized in the table below.

Sample	Chromatographic Purity (% area at 312 nm)
GW-501516	99.6

The chromatogram is enclosed for your reference.

Neil E. Spingarn, Ph.D.
President

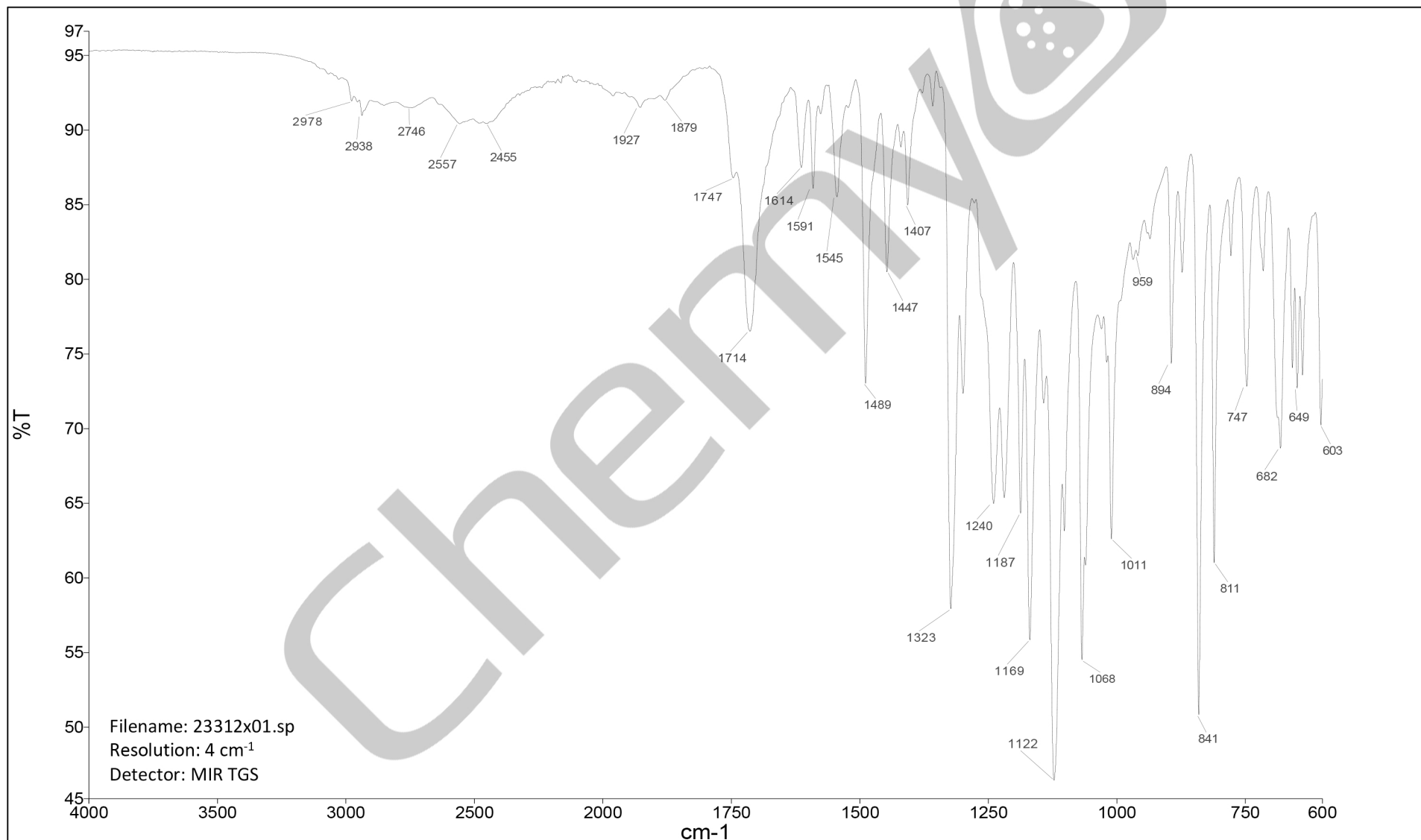
23312

S&N Labs

2021 E. Fourth Street, Suite 112
Santa Ana, CA 92705
Tel: 714-543-2211

Sample: GW 501516**Date:** 07/30/2019**Analyst:** Chris French**Client:**

Chemyo LLC

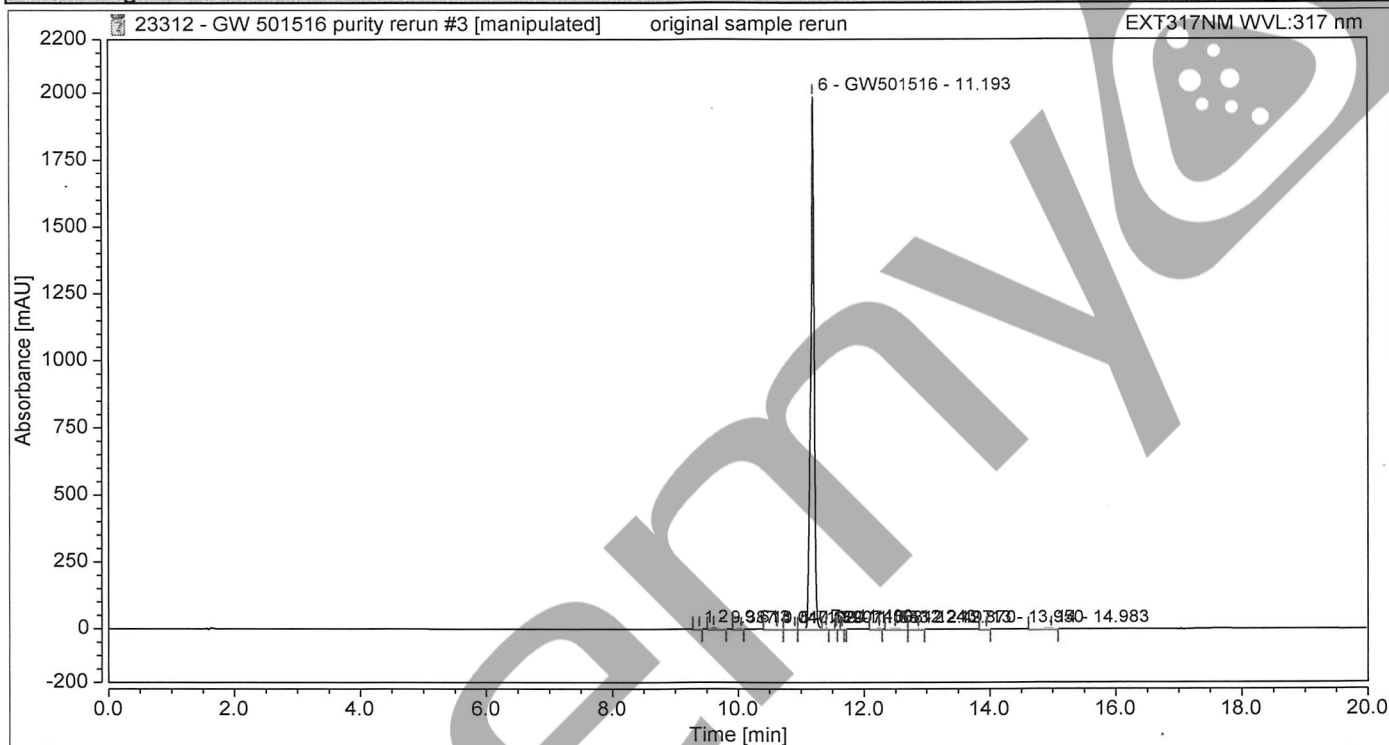


Chromatogram and Results

Injection Details

Injection Name:	original sample rerun	Run Time (min):	20.00
Vial Number:	RA2	Injection Volume:	5.00
Injection Type:	Unknown	Channel:	EXT317NM
Calibration Level:		Wavelength:	210.0
Instrument Method:	23312 - GW 501516 purity rerun	Bandwidth:	10
Processing Method:	23312 - GW 501516 purity rerun	Dilution Factor:	1.0000
Injection Date/Time:	07/Aug/19 12:52	Sample Weight:	1.0000

Chromatogram



Integration Results

No.	Peak Name	Retention Time min	Area mAU*min	Height mAU	Relative Area %	Relative Height %	Amount
1		9.387	0.005	0.093	0.00	0.00	n.a.
2		9.613	0.145	2.495	0.11	0.12	n.a.
3		10.047	0.006	0.095	0.00	0.00	n.a.
4		10.620	0.018	0.197	0.01	0.01	n.a.
5		10.907	0.007	0.060	0.01	0.00	n.a.
6	GW501516	11.193	125.813	1988.099	99.52	99.55	n.a.
7		11.400	0.095	2.411	0.08	0.12	n.a.
8		11.563	0.000	0.017	0.00	0.00	n.a.
9		11.653	0.002	0.058	0.00	0.00	n.a.
10		12.243	0.124	1.981	0.10	0.10	n.a.
11		12.497	0.047	0.460	0.04	0.02	n.a.
12		12.870	0.022	0.242	0.02	0.01	n.a.
13		13.950	0.003	0.046	0.00	0.00	n.a.
14		14.983	0.126	0.770	0.10	0.04	n.a.
Total:			126.414	1997.024	100.00	100.00	